

**EAGLE PLANT
PORTABLE
ACCOMMODATION**

*we deliver
our promises*

Office Units

- Fully Insulated
- Lined With Washable Boards
- Vinyl Floor Covering
- Fully Furnished
- Electric Lights and Light Switches
- 13amp Double Switched Sockets
- 2kw Wall Mounted Heater(s)
- Wired To I.E.E. Regs.
- Lock And Leave Personnel Door
- Sliding Windows
- Hinged And Lockable Shutters
- Painted To Customers Spec.

“The Only Solution You Need”

Eagle Plant provides the only solution you need for your portable accommodation in any situation, including those areas of potentially high risk vandalism or theft.



Modern businesses and contractors demand the best level of security, comfort and flexibility, whether units are being used for temporary relocation, short term office overflow or on site applications.

Eagle Plant portable accommodation units although being within the secure steel outer casing, provide a comfortable and inviting environment.

Ample daylight is provided by the sliding windows, and the incoming light is reflected around the unit from the cream washable board walls and vinyl flooring, ensuring a pleasant and productive workspace.



Bespoke interiors can be tailored to your specific requirements and standard layouts are always available, offering single office, multiple offices, or split office and store layouts.

All windows have the added protection of steel shutters operated and secured from the inside of the unit with spring loaded retaining bolts. All external doors are of a steel construction and secured with five lever deadlocks.

Units are available in varying lengths and widths (see technical data) and can be double stacked or linked to provide an extensive office complex.

Eagle Plant's experienced and friendly staff are always at hand to advise on the best solution for your particular requirements.

All units are delivered with our own fleet of specialist vehicles, driven and operated by our experienced and certificated operators, who will advise and position the units on your site.



Secure Stores

- Specially Designed For Material And Tool Storage
- Purpose Built
- Fully Welded Construction
- Sizes From 10ft to 32ft
- 5 Lever Deadlocks
- Anti Jemmy Hinges
- Painted To Customers Spec.

“Security Features Second To None”

Eagle Plant provides a comprehensive range of steel storage units ranging from compact 2991mm (10ft) to the cavernous 9604mm (32ft) unit.

The steelstore units are specifically designed for the storage of materials, tools and equipment on construction sites. However they are also suitable for overflow storage in retail applications or temporary storage in a variety of other situations.

Wherever you have a need for secure storage then look no further than a solution provided by Eagle Plant.

The security features of the secure storage units are second to none. These units are purpose built and not converted shipping containers. Each unit is manufactured from fully welded 1.6mm profiled steel, forming both the walls and roof sections.

Access to the steelstore is via twin outwardly opening doors. These allow for a clear access of 1916mm width by 2133mm high (6ft 3in x 7ft), which allows for easy entry for those larger items. For safety the doors are fitted with retainers, alleviating the possibility of personnel being shut inside.



The steelstore is secured with a 5 lever deadlock and the doors are fitted with 'invisible' anti jemmy hinges to give you peace of mind when leaving the unit unattended.

The floor is constructed with a covering of 15mm exterior grade plywood over rolled steel channel bearers, this substantial structure can accommodate evenly distributed loads of 20 tonnes in a static 6.40m x 2.44m (21ft x 8ft) steelstore.

As always Eagle Plant is at hand to advise on the best solution for your application.

All units are delivered with our own fleet of specialist vehicles, driven and operated by our experienced and certificated operators, who will advise and position the units on your site.



Canteen Units

- Fully Insulated
- Single drainer sink
- Lined With Washable Boards
- Vinyl Floor Covering
- 3kw Water Heater
- 2kw Wall Mounted Heater
- Electric Lights And Light Switches
- 13amp Double Switched Sockets
- Wired To I.E.E. Regs.
- Lock And Leave Personnel Door
- Sliding Windows
- Hinged And Lockable Shutters
- Painted To Customers Spec.

“Clean and Comfortable Surroundings”

An important addition to your site accommodation will be canteen and kitchen facilities.



Employers are all too aware of the importance of clean and comfortable surroundings for times of relaxation and food consumption, so once again Eagle Plant is able to advise and supply units specific to your individual needs.

Eagle Plant's canteens come complete with single drainer sink, cold water tap and electric water heater, together with an ample work surface.

All units are fully insulated and furnished with table(s), chairs, notice boards and 2kw electric heaters for maximum comfort.

Canteens are manufactured to the same high standards as the other units in the Eagle Plant range of accommodation with cream washable board walls and vinyl flooring.



Welded steel construction and lock and leave doors with 5 lever deadlocks make the units very secure for use in areas with a potentially high risk of vandalism or theft.

Daylight is provided by the sliding windows, that have the added protection of steel shutters, operated and secured from inside of the unit with spring loaded retaining bolts.

Electric lights and socket outlets are provided together with a distribution board all tested and wired to current IEE. Regs.

Combined with other units in our range, Eagle Plant Canteens complete your on-site accommodation complex.



Toilet Units

- Separate Toilet and Combined Toilet / Shower Units
- Lined With Washable Boards
- Vinyl Floor Covering
- Electric Lights and Light Switches
- Fully Insulated
- 3kw Water Heater
- Wired To I.E.E. Regs.
- 5 Lever Deadlocks
- Mesh Window Guards
- Painted To Customers Spec.

“Designed for Ease of Maintenance.”

Eagle Plant provides a range of toilet and shower units which compliment their range of office accommodation and canteen facilities.

Each unit is manufactured from fully welded 1.6mm steel.

Separate doors for male and female facilities are secured using 5 lever deadlocks, for times when the unit must be left unattended and high level opening windows come complete with mesh guards.

The interior wipe clean surfaces are specifically designed for ease of day to day servicing and maintenance.

Each toilet cubicle is fitted with a low level white vitreous china WC, cistern, toilet roll holder, hat and coat hook, and a vacant / engaged bolt fitted to the door.

Urinals are supplied by a cistern complete with a water conservation valve and the vitreous enamel wash hand basins have both an individual cold tap and a shared 3kw water heater between pairs of basins.



Wash hand basins are large enough to allow immersion of a full forearm into the water, with clenched fist to elbow.

Electric heaters are used for heating and all units have lighting and built in RCD's to current IEE Regs.

Toilet blocks can be connected to mains sewage systems or Eagle Plant can supply purpose built effluent tanks installed beneath the unit.

Blocks supplied with showers have individual cubicles with electric showers and bench seating together with adequate lighting.

And of course Eagle Plant's vast experience is always at hand to recommend the best solution for your needs.



Plug & Go

- 20kva 240V / 110V Generator
- Plug and Socket Electrical and Water Connections
- 1000 Litre Fuel Tank
- 200 Litre Water Tanks
- 'Water On Demand' Pumped System
- Toilet and Hot Water Hand Basin
- Drying Room
- 5 lever deadlocks

"A Unique Self Contained Facility."

It is now an essential requirement for contractors to provide basic on site welfare facilities for employees and visitors, from the instigation of a new site operation.

These facilities will require all the usual mainstream services including hot and cold running water, electricity, drying rooms and toilets.



These services are rarely available at a new site through reasons of disconnection or simply they have yet to be laid. Waiting

for services to be connected can add weeks if not months to a particular job.

Eagle Plant has a unique answer to this problem in the form of their Plug and Go Start Up Unit.

This unique self contained facility is housed in a site secure anti-vandal unit fitted with 5 lever deadlocks.

A 240/110V 20kva Diesel Powered Generator serviced by a 1000 Litre long running fuel tank and fitted with an autolube to maintain oil levels, supplies the electrical supply.



Water (not suitable for drinking) is supplied from two 100 Litre water tanks, and is pumped to further accommodation units by a 'water on demand' system.



A recirculating toilet and hand wash basin, with auto sensor, allows 20 seconds of hot water to be supplied automatically and a small drying room is also housed within the unit.

Delivered and offloaded on site by Eagle Plant transport, your site is up and running with minimum disruption and down time.

Electrical and water supplies are easily connected to other Eagle Plant units with simple plug and socket connections. These can be connected by Eagle Plant on delivery, effectively making the services of an electrician and plumber redundant!



GP 360

- HSE Compliant
- One man '3 min Set Down' Operation
- 6kva 240V Diesel Generator
- Toilet and Wash Hand Basin
- Drying Room
- Single Sink
- Instant Hot Water
- Drinking Water
- Microwave
- Table and Seating for 6
- 5 lever deadlocks

“One Easily Transportable Unit.”

It is now an HSE requirement for contractors to provide basic welfare facilities when three or more employees are working in the open.

Always being aware of changes in legislation Eagle Plant has introduced the GP 360, which addresses all these HSE requirements in one easily transportable unit.

The GP 360 complies with all 6 of the HSE Regulations for the Health and Safety at Work Act for Welfare:

- Regulation 20 Sanitary Conveniences**
- Regulation 21 Washing Facilities**
- Regulation 22 Drinking Water**
- Regulation 23 Accommodation for Clothing**
- Regulation 24 Facilities for Changing Clothing**
- Regulation 25 Facilities to Rest and Eat Meals**

Easily towed, the GP 360 is parked at its location and then set down using its unique hydraulic jacks and retracting wheels. Once on the ground the towbar is covered with the integral nose cone for added security.

All these operations can be completed in less than 3 minutes by one person!

The rear of the unit houses a recirculating toilet with hand washing facilities, a drying room and super silenced diesel generator.



The front of the unit is furnished with a kitchen comprising a single stainless steel sink with cold water tap, 20ltr. of fresh

drinking water with disposable cup dispenser, a 20ltr waste water butt, instant hot water hand wash, microwave and first aid kit. Inside surfaces are easily cleaned and maintained

during day to day use.

The adjoining rest area includes a table and seating area for up to six people, with electric heater and remote starting facility for the generator.

The unit is made secure with 5 lever deadlocks on each door and internally bolted shutters across the window.

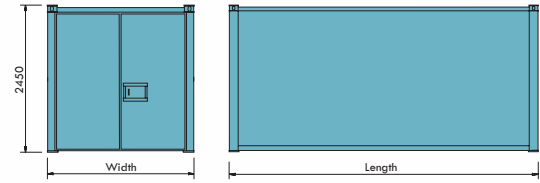
As the work area moves, the GP 360 easily moves with it. With only a 3 minute pick up and set down, downtime is reduced to an absolute minimum. Saving both time and money.





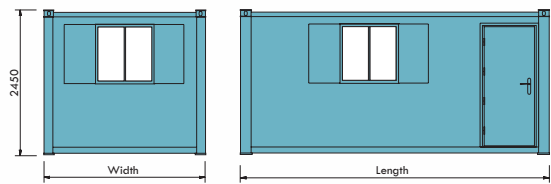
Secure Stores

WIDTH (ft) (m)	LENGTH							
	10 3.0	12 3.6	16 4.9	20 6.1	21 6.4	24 7.3	28 8.6	32 9.8
8 2.4	✓	✓	✓	✓	✓	✓	✓	✓
9 2.7	✓	✓	✓	✓	✓	✓	✓	✓
10 3.0	✓	✓	✓	✓	✓	✓	✓	✓



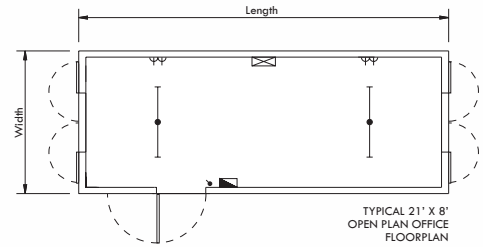
Portable Accommodation

KEY TO SYMBOLS	
	CONSUMED UNIT
	3kw CONVECTOR HEATER
	TWIN SOCKET 300mm ABOVE F.F.S.
	TWIN SOCKET 1000mm ABOVE F.F.S.
	3kw 7L INSTANT WATER HEATER
	BULKHEAD LIGHT
	4' FLUORESCENT LIGHT
	LIGHT SWITCH
	LIGHT PULLSWITCH
	FUSED SPUR AND THERMOSTAT
	4' TUBE HEATER
	2' TUBE HEATER



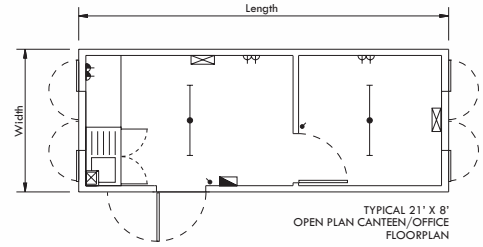
Open Plan Offices

WIDTH (ft) (m)	LENGTH							
	10 3.0	12 3.6	16 4.9	20 6.1	21 6.4	24 7.3	28 8.6	32 9.8
8 2.4	✓	✓	✓	✓	✓	✓	✓	✓
9 2.7	✓	✓	✓	✓	✓	✓	✓	✓
10 3.0	✓	✓	✓	✓	✓	✓	✓	✓



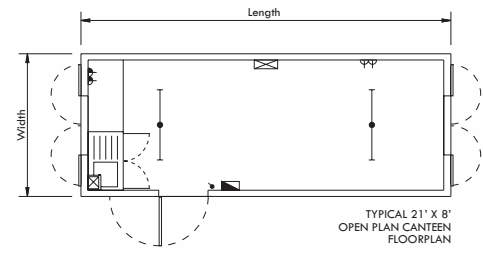
Canteen/Offices

WIDTH (ft) (m)	LENGTH							
	10 3.0	12 3.6	16 4.9	20 6.1	21 6.4	24 7.3	28 8.6	32 9.8
8 2.4	✓	✓	✓	✓	✓	✓	✓	✓
9 2.7	✓	✓	✓	✓	✓	✓	✓	✓
10 3.0	✓	✓	✓	✓	✓	✓	✓	✓



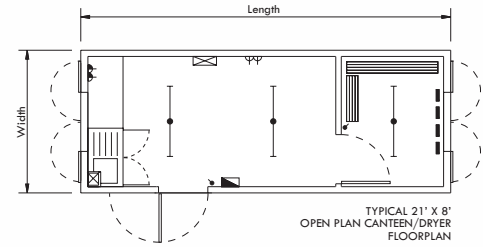
Open Plan Canteens

WIDTH (ft) (m)	LENGTH							
	10 3.0	12 3.6	16 4.9	20 6.1	21 6.4	24 7.3	28 8.6	32 9.8
8 2.4	✓	✓	✓	✓	✓	✓	✓	✓
9 2.7	✓	✓	✓	✓	✓	✓	✓	✓
10 3.0	✓	✓	✓	✓	✓	✓	✓	✓



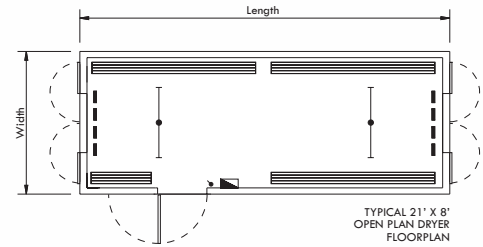
Canteen/Dryers

WIDTH (ft) (m)	LENGTH							
	10 3.0	12 3.6	16 4.9	20 6.1	21 6.4	24 7.3	28 8.6	32 9.8
8 2.4	✓	✓	✓	✓	✓	✓	✓	✓
9 2.7	✓	✓	✓	✓	✓	✓	✓	✓
10 3.0	✓	✓	✓	✓	✓	✓	✓	✓



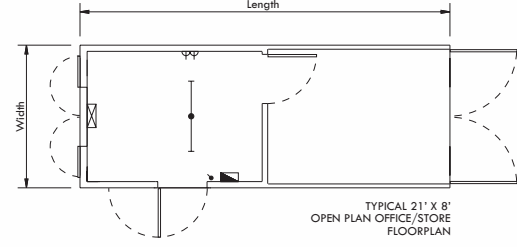
Open Plan Dryers

WIDTH (ft) (m)	LENGTH							
	10 3.0	12 3.6	16 4.9	20 6.1	21 6.4	24 7.3	28 8.6	32 9.8
8 2.4	✓	✓	✓	✓	✓	✓	✓	✓
9 2.7	✓	✓	✓	✓	✓	✓	✓	✓
10 3.0	✓	✓	✓	✓	✓	✓	✓	✓



Office/Stores

WIDTH (ft) (m)	LENGTH							
	10 3.0	12 3.6	16 4.9	20 6.1	21 6.4	24 7.3	28 8.6	32 9.8
8 2.4	✓	✓	✓	✓	✓	✓	✓	✓
9 2.7	✓	✓	✓	✓	✓	✓	✓	✓
10 3.0	✓	✓	✓	✓	✓	✓	✓	✓



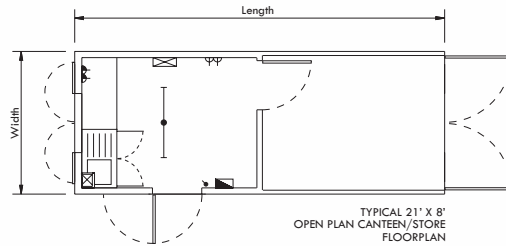
EVERY EFFORT IS MADE TO ENSURE ACCURACY AT TIME OF GOING TO PRESS. HOWEVER AS PART OF OUR POLICY OF CONTINUAL IMPROVEMENT WE RESERVE THE RIGHT TO ALTER SPECIFICATIONS WITHOUT PRIOR NOTICE.

Command:
Command: _toolbar
Command: |



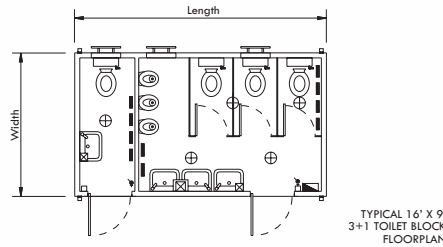
Canteen/Stores

WIDTH	LENGTH											
	8	10	12	16	20	21	24	28	32	(ft)	(m)	
8	2.4					✓	✓					
9	2.7											
10	3.0											
(ft)	(m)											



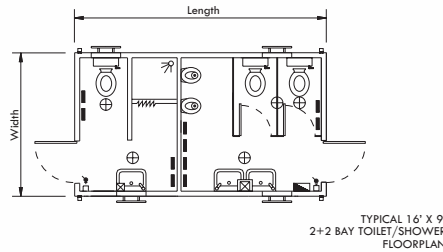
Toilet Blocks

WIDTH	LENGTH											
	8	10	12	16	20	21	24	28	32	(ft)	(m)	
8	2.4					✓	✓					
9	2.7											
10	3.0											
(ft)	(m)											



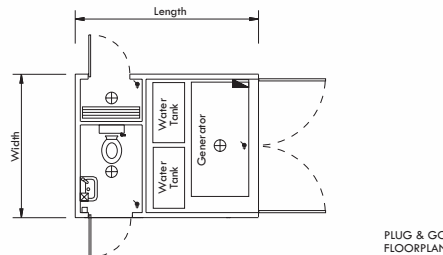
Toilet/Shower Blocks

WIDTH	LENGTH											
	8	10	12	16	20	21	24	28	32	(ft)	(m)	
8	2.4					✓						
9	2.7											
10	3.0											
(ft)	(m)											

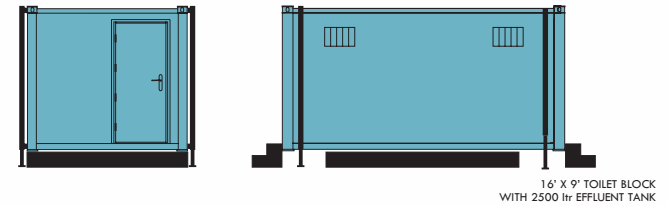


Plug & Go

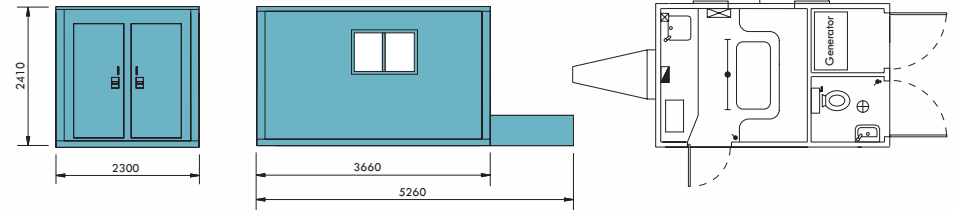
WIDTH	LENGTH											
	8	10	12	16	20	21	24	28	32	(ft)	(m)	
8	2.4	✓										
9	2.7											
10	3.0											
(ft)	(m)											



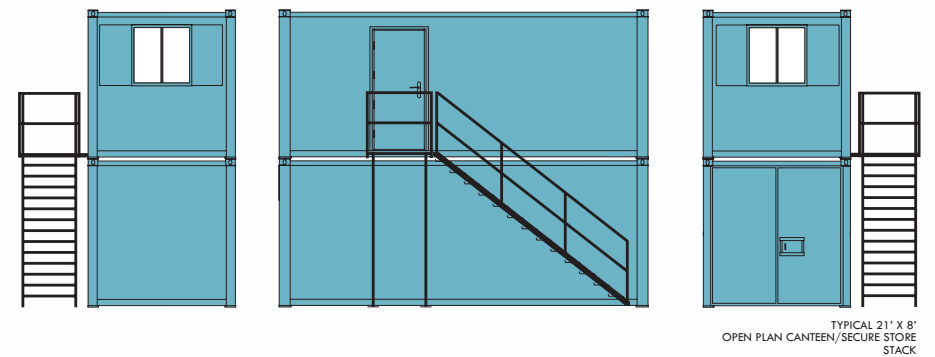
Effluent Tank



GP 360



Office/Store Stack



EVERY EFFORT IS MADE TO ENSURE ACCURACY AT TIME OF GOING TO PRESS. HOWEVER AS PART OF OUR POLICY OF CONTINUAL IMPROVEMENT WE RESERVE THE RIGHT TO ALTER SPECIFICATIONS WITHOUT PRIOR NOTICE.

Command:
Command: _toolbar
Command: |